



**Innovation.** In our raw materials. In our solutions.

---



**COST / PERFORMANCE**

---

**ENVIRONMENT / HEALTH & SAFETY**

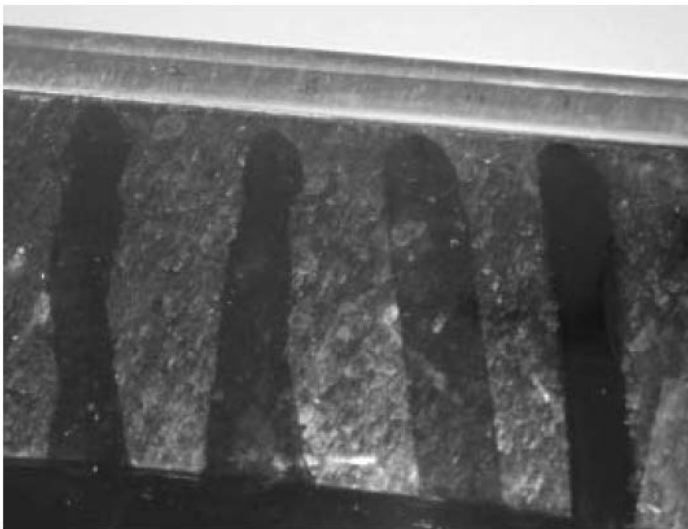
---

**PERFORMANCE**

---

**USES & APPLICATIONS**

---



A formulation of ALB/PPS/ES1 (far left) offered the best results compared to 3 other formulations of alcohol ethoxylate/anionic based systems that were tested.

---



**Innovation.** In our raw materials. In our solutions.

---

## iDATA<sup>SM</sup> assist

### **Need assistance in developing a custom solution?**

Win has a full-service lab that can collaborate with you and help you meet your cost, performance and environmental objectives! **Click the HELP! icon** and let us earn the right to invest in your success!



---

### **PRODUCT SPECIFICATIONS**

---

### **PACKAGE & HANDLING**

---

### **REGULATORY / TOX INFORMATION**

---